



The owner and **President Mr Gregorčič** is the son of the family dynasty Gregorčič, which is one of the largest suppliers of plastic parts for vehicles as well as recreational vehicles. They operate a state-of-the-art production with 1,500 employees in Slovenia. They also sell acrylic windows (Michael Gregorčič was managing this company for 16 years).

Therefore, the idea was born to create lightweight doors in the best available plastic material that should more than satisfy the needs of the international market!



In this case, there was the possibility to combine all necessary available powers and competences by overtaking all activities from Clear Vision Cooling.

The **doortech group** is a very experienced team with a high-level of professionalism on a global scale.



Highest standard solution for retrofitting and OEM integration!

Energy saving up to 50%



Door Tech Group d.o.o.
Brezovica 55, SI-8220 Šmarješke Toplice

Mob: +386 51 270 813
Tel: +386 82 015 525
E-mail: katarinak@doortech-group.com
Web: www.doortech-group.com



New door solution for refrigerated cabinets

Made by highest quality PET plastic

- Safe
- Light
- Transparent
- 100% Recyclable



Full Vision Doors HG

Maximum safety, transparency and ergonomical handling

Advantages

- Highest safety (no breakages)
- Easily and fully recyclable
- Light weight (1/3 of Glass)
- Easy handling – children safety
- Self-closing with a soft mechanism
- Hinges tested more than 500,000 times
- Energy saving up to 50%
- Can be retrofitted to commercially available cabinets
- Perfectly developed for OEM integration
- Designed according DIN EN ISO 23953
- Lab test according to the Class 3:25C° and 60% of humidity
- Other handle solutions available
- Fast installation (80% less time compared to Glass)
- Warranty: 2 years, external damages not included



Maintenance of hydraulic hinges:

- Made of high-quality materials
- Hermetically sealed and no leakages of oil
- Water resistant
- 500,000 opening and closing movements guaranteed
- Slim version almost invisible

A smooth closing system (adjustable) also guarantees easy and pleasant handling and a so-called 'Mercedes-effect'!



Full Vision RIM / Cold room doors

Almost unbreakable fully transparent hinged doors

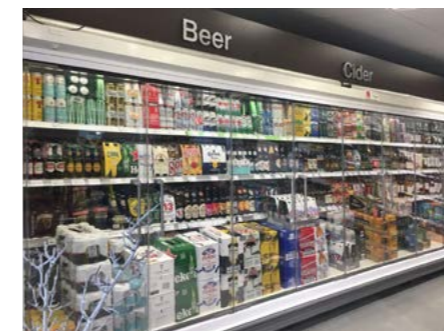
Advantages

- Completely frameless
- Easily and fully recyclable
- Light weight (1/3 of Glass)
- Energy saving up to 50%
- Available with metal cover on the bottom part
- Alternatively available with a milky foil on the bottom part
- Fast installation – easy to remove



Additional advantages of Full Vision RIM/Cold room doors

- Completely frameless
- Easily and fully recyclable
- Light weight (1/3 of Glass)
- Energy saving up to 50%
- Available with metal cover on the bottom part
- Alternatively available with a milky foil on the bottom part
- Fast installation – easy to remove



Full Vision SL doors

The first aesthetic, light weight, easy to use, and safe sliding door solution with new developed PET doors

Advantages

- Gravity closing lifting hinges
- The possibility of joining sashes of different widths and the 'single frame' system
- Vertical LED lighting can be installed
- Simple assembly and maintenance
- Easy adaptation for installation in existing racks



Description

- Extremely flexible sliding solution
- Available for retrofitting and OEM integration
- Tested under LAB conditions, Class 3 (25/60)
- Long-life use because of robust PET material
- Automatic self-closing system
- Limit breaking system guarantees an easy handling, opening, and closing

